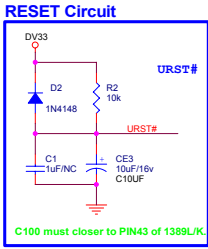
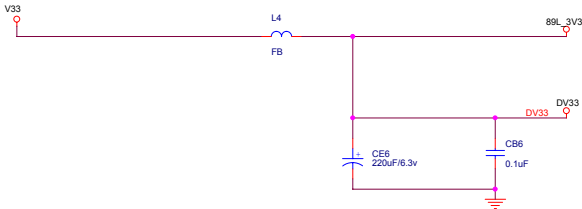
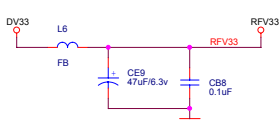
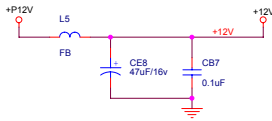
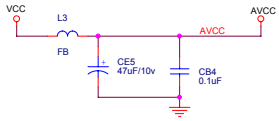
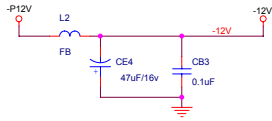
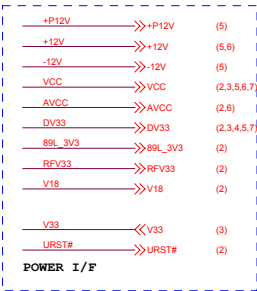
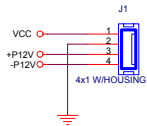


- 1 INDEX & POWER, RESET
- 2 MT1389L/K LQFP128
- 3 MOTOR DRV
- 4 SDRAM & FLASH
- 5 AUDIO I/F
- 6 VIDEO I/F

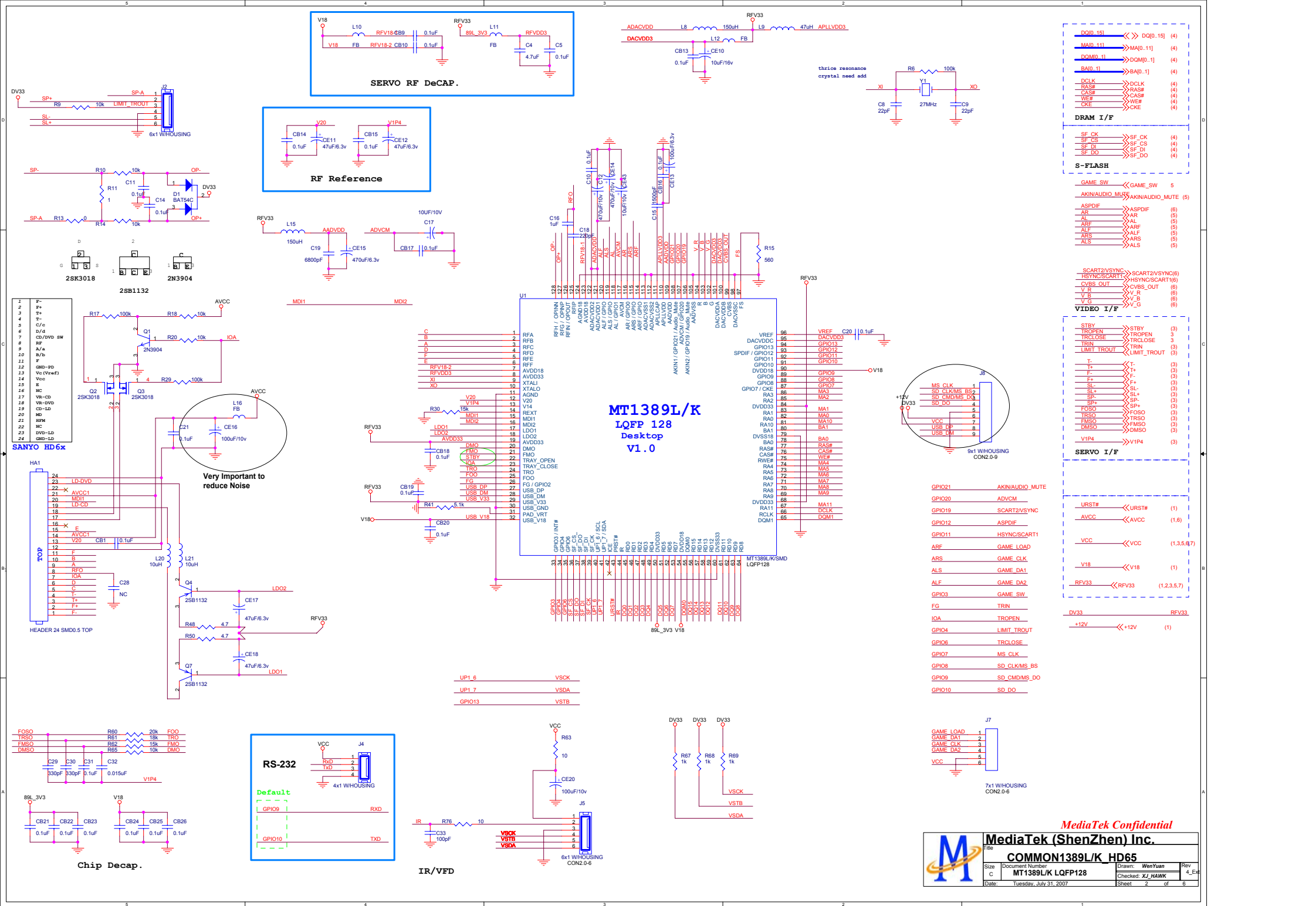
MT1389L/K Full Function:
(USB,1CH MIC,6CH
DAC,VGA,SCART,GAME,CARD,VFD)

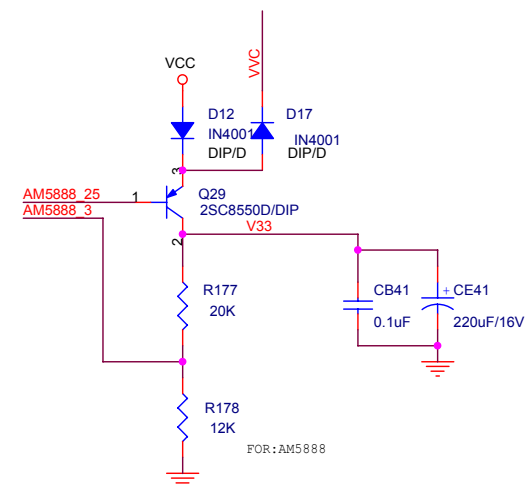
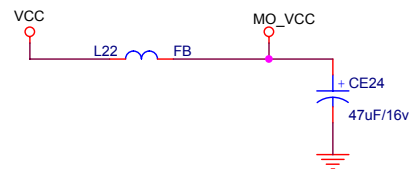
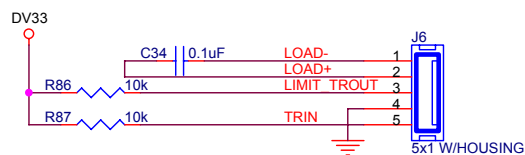
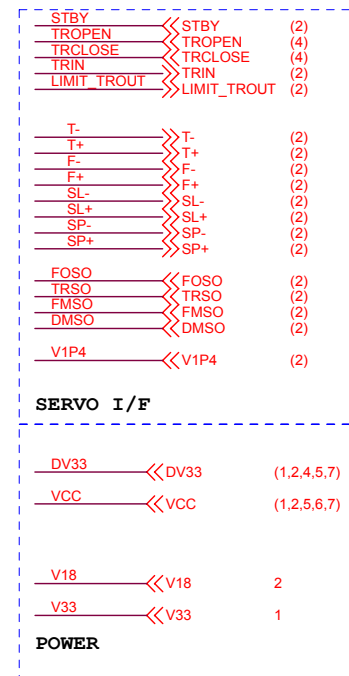
MT1389L/K General GPIO List

| Name | PIN | Features | |
|--------|-----|-----------|------------|
| GPIO3 | 33 | GAME_SW | |
| GPIO4 | 34 | LIMIT | TROUT |
| GPIO6 | 35 | TRCLOSE | |
| GPIO7 | 87 | MS_CLK | |
| GPO_A | 22 | STBY | |
| GPO_B | 23 | TROPEN | IOA |
| GPIO2 | 26 | TRIN | |
| GPIO8 | 88 | MS_BS | SD_CLK |
| GPIO9 | 89 | MS_D0 | SD_CMD |
| GPIO10 | 91 | SD_D0 | |
| GPIO11 | 92 | SCART1 | HSYNC |
| GPIO12 | 93 | ASPDIF | |
| GPIO13 | 94 | VSTB | |
| GPIO19 | 106 | SCART2 | VSYNC |
| GPIO20 | 107 | ADVCM | |
| GPIO21 | 108 | AKIN1 | AUDIO_MUTE |
| GPIOK0 | 27 | USB_DP | |
| GPIOK1 | 28 | USB_DM | |
| GPIOK2 | 31 | PAD_VRT | |
| UP1_6 | 40 | VSCK | |
| UP1_7 | 41 | VSDA | |
| ARF | 114 | AUDIO_ARF | GAME_LOAD |
| ARS | 115 | AUDIO_ARS | GAME_CLK |
| ALS | 119 | AUDIO_ALS | GAME_DA1 |
| ALF | 120 | AUDIO_ALF | GAME_DA2 |



OPTION FOR 5888





10

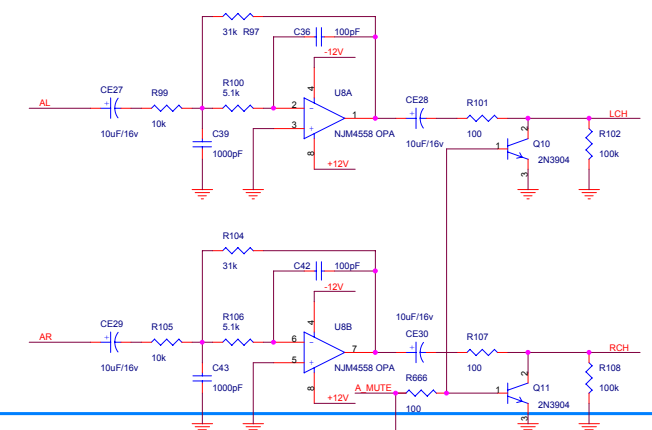


6



□ A

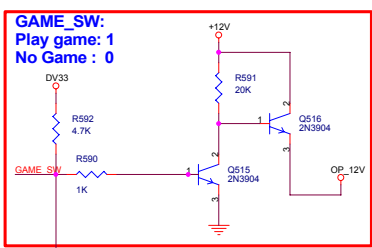
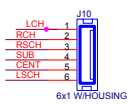




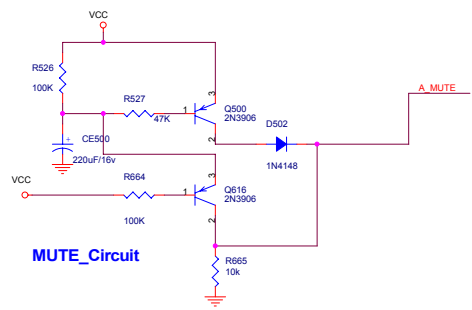
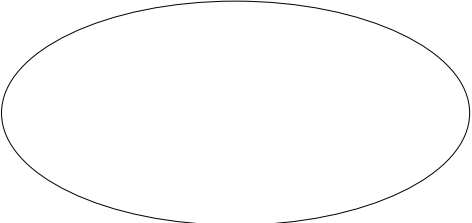
MIC INPUT

AKIN1 signal:Vp-p<=700mV

Only for MT1389L,not for MT1389K.
R & C closed to MT1389



GAME_SW:
Play game: 1
No Game : 0



MUTE_Circuit

| | | |
|-----|-----|-----|
| AR | AR | (2) |
| AL | AL | (2) |
| ARS | ARS | (2) |
| ALS | ALS | (2) |
| ARF | ARF | (2) |
| ALF | ALF | (2) |
| RCH | RCH | (6) |
| LCH | LCH | (6) |

| | | |
|-----------------|-----------------|---|
| AKIN1AUDIO_MUTE | AKIN1AUDIO_MUTE | 2 |
|-----------------|-----------------|---|

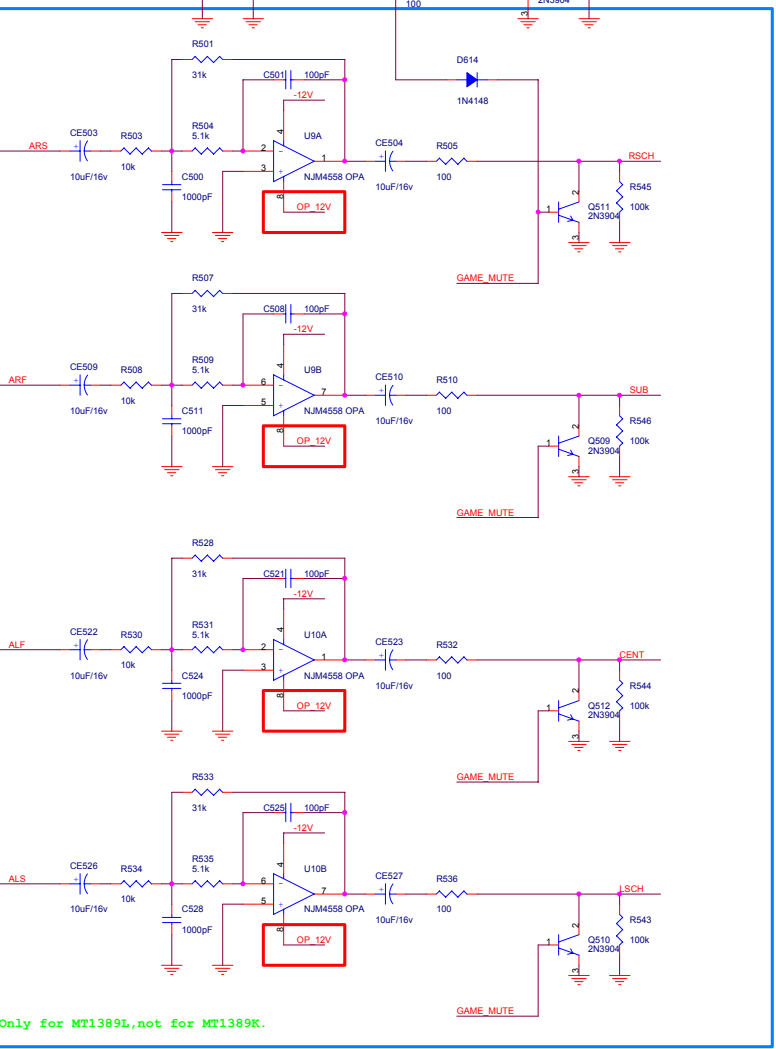
AUDIO I/F

| | | |
|---------|---------|-----|
| GAME_SW | GAME_SW | 5 |
| R/V_OUT | R/V_OUT | (6) |
| B/U_OUT | B/U_OUT | (6) |
| G/Y_OUT | G/Y_OUT | (6) |

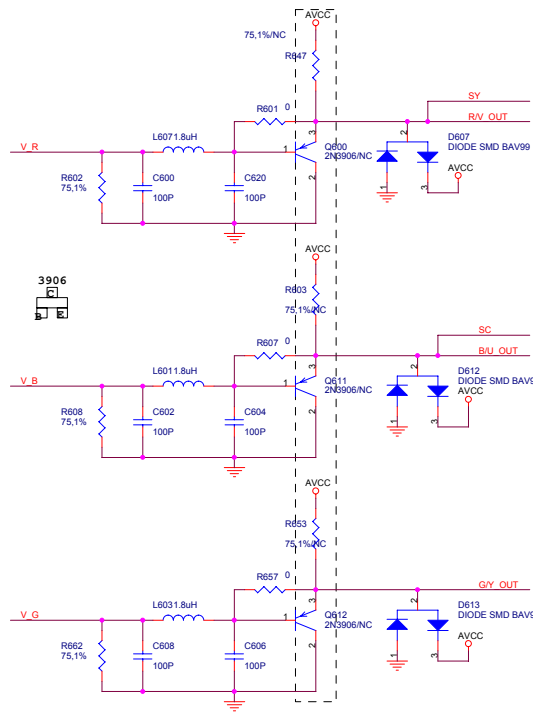
YUV I/F

| | | |
|-------|-------|-------------|
| +12V | +12V | (1,8) |
| -12V | -12V | (1) |
| DV33 | DV33 | (1,2,3,4,7) |
| VCC | VCC | (1,2,3,4,7) |
| +P12V | +P12V | (1) |

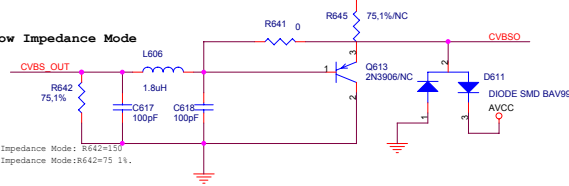
POWER



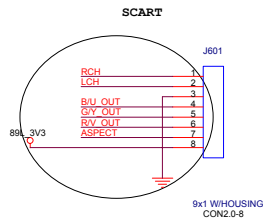
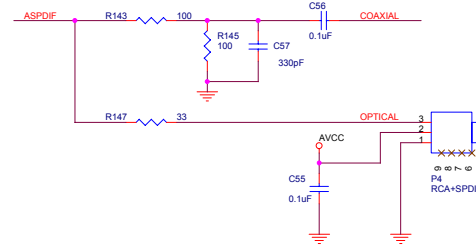
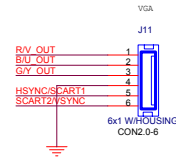
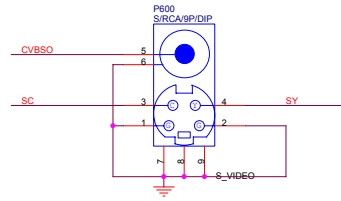
Only for MT1389L,not for MT1389K.



Low Impedance Mode



H-Impedance Mode: R642=150
L-Impedance Mode: R642=75 1Ω



SCART不支持CVBS输出，支持RGB输出

SCART CONTROL

